

AUCTION

Auction for

Richard & Michele Rokosh

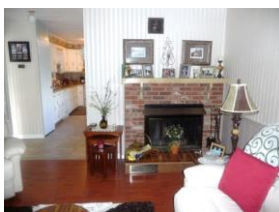
Sunday, August 17, 2014 10 a.m.

Hubbard, SK

DIRECTIONS: 3.7 Kms east of Hubbard on Highway 15

MOBILE HOME & GARAGE

Beautiful 1982 mobile home. It is 14' wide by 76' long with a 30' by 11' addition. This mobile home and addition has been built with 2 x 6 construction. It has new shingles, new flooring, some new windows and new exterior doors. It has 2 treated decks, the front deck is 8' x 10' and the rear deck is 12' x 16' with a 4' wide x 32' long wheelchair ramp. Three bedrooms, cold storage room, office, large entrance, very well kept and maintained. This home has a new energy efficient natural gas furnace, air conditioning, a fire place and includes fridge, stove and dishwasher. Also in this package includes a single car garage that also has new shingles. Sale of this home is subject to seller's approval and will be sold at approximately 1 p.m. To view in advance call 306-795-2986 or 306-795-2293 evenings.



TILLAGE & SEEDING

IH 21 Foot Drill; Morris Seed Rite, 2 - 14' sections; 18' Cultivator; 25' Morris Cultivator with Degleman Harrows

TRUCKS & TRAILERS

1974 Dodge one tonne truck with hoist; 1993 GMC 3500 4 X 4; 8' wide x 12' long flat deck



FURNITURE & ANTIQUES

Oak China Cabinet, Oak Table and six chairs, China Cabinet, Side Board, Table and Six Chairs, Singer Sewing Machine, Office Chair, Mirrors, Crocks, Pickle Jars, Cream Cans, Booker Coal Heater



RECREATIONAL

1993 Salem 21' Camper, 3 way fridge, stove, furnace, Sleeps 6; Sylvan 18' Aluminum Boat, 90 hp Mercury Motor, Fish Finder, Canvas Cover, Trailer; Sprinter 14' Aluminum Boat, with electric trolling motor and trailer; Fishing Shack; Beaver Traps; Coyote Traps



LIVESTOCK EQUIPMENT

12' bumper hitch Livestock Trailer; Sperry New Holland #380 Tub Grinder; Vermeer #605 Round Baler; Bale feeders, assorted panels, Electric Fencer, Bale Elevator, Syringes, Calf Puller, Chicken waterers, feeders, heaters and lamps



YARD & GARDEN

Cub Cadet Zero Turn Lawn Mower, less than one year old, 62 hrs atol, 42 inch deck, rear bagger; Rear Bag Push Mower; Powermate Rototiller (less than one year old); 8hp Turf Til Rear Tine Rototiller; Mumford Midland Brush Cutter; Yard Wagon; Field King Yard Trailer; Weed Trimmer; Planters; ornaments; Patio Set



MISCELLANEOUS

8' Bulldozer; Tree Spade; Wheat Heart Post Hole Auger, 12" and 8" bits; 8' discer; 4 Pay Loader tires 20.5 x 25; Quad Tires; 5 - Trailer Axles; 100 gallon Slip Tank; 4 - two Furrow Plows; 2 three Furrow Plows

HARVEST & GRAIN

IH 815 Combine, Field Ready, 2654 hrs atol, New belts on the pickup; MF #35 pull type swather, 25'; Mid West #252 Grain Vac; Grain Trailer for tractor use; Adasso Grain Cleaner with screens; Portable Grain bin, Plywood Ring with Tarp; Hydraulic Drill Fill



TOOLS & MATERIAL

Scaffolding, Cement Forms, Bin cement Forms; Propane Construction Heater; Powermate 10 hp Generator; Comet Welder; Rockwell Table Saw; Safety Harness; 8000 lb Electric Winch; Shop Vac, Hand Tools; Band Saw, Radial Arm Table Saw; Air Nailers, Power Snake; Propane Gauges, Acetylene tank and Gauges; Metal, Lumber, Power Poles; 3 bundles of 1" blue Styrofoam insulation; Screws, Nails, Jerry Cans, Brand New Submersible Well Pump

AUCTIONEER'S NOTES: We are very pleased to conduct this sale for Richard and Michele. Come out and wish them well in their move. Hope to see you there! Robert

Auctioneer: Robert Ross Lic# 309790

FOR A COMPLETE LISTING VISIT:

www.doublerauctions.net

www.globalauctionguide.com

Box 285, Ituna, Saskatchewan, S0A 1N0
(306) 795-7387

Personal, Professional Auctions tailored to your needs!

TERMS & CONDITIONS: No items to be removed until settled for by cash or cheque. The listing is a guide and is no way a guarantee or warranty. The sale is subject to additions and deletions. The Auction Service or the Owners are not responsible for any accidents or errors in printing.

