

AUCTION

Inventory Reduction for Last Mountain Co-op

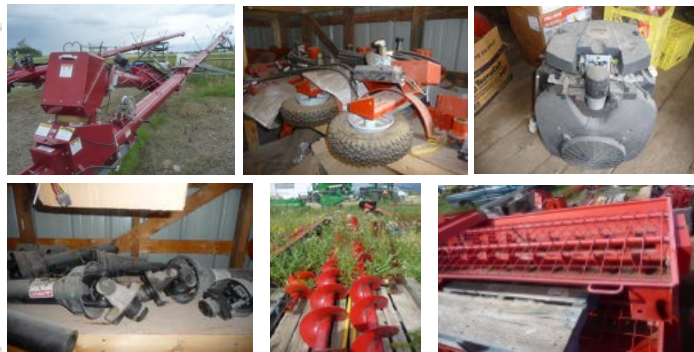
Saturday, October 22, 2016 10 a.m.

Raymore, SK

DIRECTIONS: Junction of Hwys #15 and #6 at the Co-op bin yard.

GRAIN HANDLING EQUIPMENT

Sakundiak SLMD 10-66, Electric Power Swing, Hydraulic Driven, Light Kit, 10 inch by 66 ft long; 5 Big Daddy Auger Hoppers; 3 Tail Gate Spouts; Assorted Hand Winches; Battery Holders for Augers; 5 Auger Movers; Kolher 34hp refurbished auger motor; 10+ Kolher Engine Maintenance Kits



COMMERCIAL FUEL TANK

15,000 litre, Split Compartment 1/3 - 2/3, Double Wall Environmental Fuel Tank (No Pump)

LIVESTOCK EQUIPMENT

Hi Hog - Panels, Gates, S Alley Sections, 4 - 200hd Canarm Watering Bowls; 10+ Gallagher Galvanized Ground Stakes; Gallagher 3 ft Pigtail Step in Electric fence posts; 3 Heated Hoses 50 ft long 5/8 Diameter; Assorted Studded T-Posts 6 to 8 ft long ; Livestock Trailer Matting; Stall Mats



LUMBER

Composite Decking, Assorted Colours 12 ft, 5pcs, 16 ft 200 pcs, 20 ft 18 pcs; Insulated Entrance Doors; Various Tin accessories - Outside Corners,, J Channel, Ridge Caps; Assorted lengths and colours of tin - watch for listing; Unassembled Gazebo

TIRES & TIRE BAY EQUIPMENT

1993 Coates 850 Tire Balancer; 1997 Snap On Tools - DLX Scanner model MT25002995; Portable Tank Blaster; Safety Cage; 6 ton Jack Stand; Hydraulic Floor Jack; Samson Reel Master Air Oil Dispenser; Lincoln Gear Oil Dispenser; Assorted Tire Bars; Tire Rack, Two Tier c/w walk Platform and safety rail 16' high; Steel Bench; Watch for listing of AG and Auto Tires

GRAIN BIN PARTS & AERATION

Westeel Elite 1805 Refurbished hopper with Skids; Horizontal Aeration; 2 Rockets; 24" to 9x14 inch transitions; 2 Gooseneck Vents; 3 Horizontal Air mounting Tubes; 4 Full Bin Indicators; 10+ One Tier Bolted Ladder Extensions; 4 Westeel Grain Bin Temperature; Kits for 14 ft 7 tier bins; 4 Westeel Grain Bin Temperature Kits for 14 ft 8 tier bins; 5 Westeel Grain Bin Doors; Temporary Grain Bin Storage Tarps



GENERAL AGRO HARDWARE

Assorted Harrow Tynes - watch for sizes; Bourgault Wedges; 20+ 8" x 43 Degree shovels; Assorted Hydraulic Hoses; Assorted 540 PTO Shafts; 5 hp Electric Single Phase Motor; 7.5 hp Electric Single Phase Motor

AUCTIONEER'S NOTES: Last Mountain Co-op is clearing out a surplus of excess inventory and assets. We will be accepting machinery, equipment and vehicles on consignment for this sale. Please contact Robert at 306-795-7387 or Ken at 306-795-5331 to consign. The earlier the better to ensure we have room for your auction consignments.



Double R Auctioneering Lic# 334142

FOR A COMPLETE LISTING VISIT:

www.doublerauctions.net

www.globalauctionguide.com

Box 285, Ituna, Saskatchewan, S0A 1N0
Robert Ross - (306) 795-7387



Personal, Professional Auctions tailored to your needs!

TERMS & CONDITIONS: No items to be removed until settled for by cash, cheque, Debit or Credit Card. The listing is a guide and is no way a guarantee or warranty. The sale is subject to additions and deletions. The Auction Service or the Owners are not responsible for any accidents or errors in printing.